



D.O. No. 15/12/2016-SBM-1



Dated 18th December, 2016

Sub: Swachh Survekshan-2017 – ‘Part-2: Independent Validation and Observation’, reg.

Dear Sir/Madam,

Please refer to DO No.15/12/2016-SBM-1 dated 5th December attaching questionnaire/indicators for ‘Service Level Status, Part-1’ and ‘Citizens Feedback, Part-3’ for Swachh Survekshan, 2017.


2. Part-2 of Swachh Survekshan-2017 ‘Independent Validation and Observation’ has been finalised and is attached for your reference and necessary action.

3. Please note that under Part-2 ‘Independent Validation’ is introduced to validate the progress against some select indicators confirmed by the ULB under Part-1. There will be negative marking if on-field validation does not confirm the status as provided under Part-1. Kindly read the document carefully and provide your city profile and data with Quality Council of India accordingly.

I look forward to your cooperation in making Swachh Survekshan-2017 a success.

With regards,

Yours sincerely,

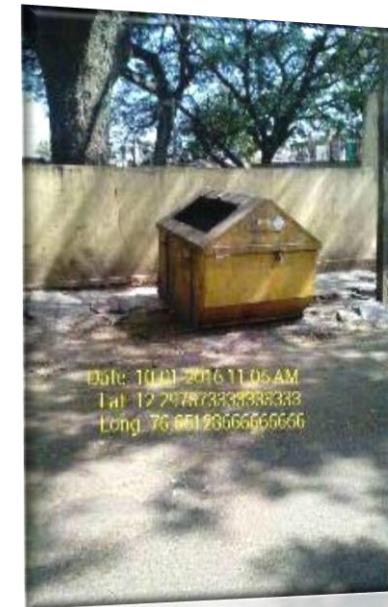

(Praveen Prakash)

To,

Mission Directors of all States/UTs

Copy to,

1. Municipal Commissioners – 500 cities
2. Secretary General – Quality Council of India
3. Director – Urban Management Centre (UMC)
4. PPS to Secy (UD)
5. Director (SBM-I)
6. CPHEEO
7. Section



सत्यमेव जयते
Ministry of Urban Development
Government of India

Swachh Bharat Mission

Questionnaire Overview Part-2

Independent Validation (Part-2A) and Observation (Part-2B)

Total Marks- 500 (25%)





Ministry of Urban Development
Government of India

Independent Validation

Part-2A

Note: ‘Independent Validation’ is introduced to validate the progress against some select indicators confirmed by the ULB under Part-1. There will be negative marking if on-field validation does not confirm the status as provided under Part-1.

Independent Validation

Residential Area : Any one of Slum/Old City/Unplanned area/
Planned area - IHHLs, CTs & PTs

1. Do you know if your application has been approved by the Nagar Nigam/ MC

Scheme of Ranking	Marks
Yes	-
No	Minimum -6.25 Maximum -50

Validation Methodology:

- A sample of 8 households to be randomly selected from the list provided by the ULB.
- If the household's answer is '**No**', **6.25 marks** will **get deducted** from Part 2-B, **for each negative response** out of 8.

Independent Validation

Residential Area: Any one of Slum/Old City/Unplanned area/
Planned area - IHHLs, CTs & PTs

2. Have you constructed/constructing the toilet using Government subsidy under Swachh Bharat Mission-Urban

Scheme of Ranking	Marks
Yes	-
No	Minimum -6.25 Maximum -50

Validation Methodology:

- A sample of 8 households to be randomly selected from the list provided by the ULB.
- If the household's answer is '**No**', **6.25 marks** will **get deducted** from Part 2-B, **for each negative response** out of 8.

Independent Validation

Community Toilet/Public Toilet (CT/PT)

3. Is the CT/ PT under construction/constructed

Scheme of Ranking	Marks
Yes	-
No	Minimum -6.25 Maximum -50

Validation Methodology:

- A sample of 8 CTs/PTs to be randomly selected from the list provided by the ULB.
- If there is a mis-match, **6.25 marks** for **each CT/PT** out of 8 will **get deducted** from Part 2-B.

Independent Validation

ODF – Self Declaration

4. ODF Wards - as declared by the ULB

Scheme of Ranking	Marks
Yes	-
No	Minimum -31.25 Maximum -125

Validation Methodology:

- A sample of 4 wards will be selected from the list of wards declared ODF by the ULB
- If the wards is found OD/protocol not followed, on the basis of random visits to schools/residential areas, **31.25 marks** for **each ward** out of 4 will **get deducted** from Part 2-B.

Independent Validation Commercial Areas

5. Twice a day sweeping done in the commercial area

Scheme of Ranking	Marks
Yes	-
No	Minimum -4.50 Maximum -36

Validation Methodology:

- A sample of 8 vendors/shopkeepers to be randomly selected from the commercial area.
- If the response is '**No**', **4.50 marks** will **get deducted** from Part 2-B, **for each negative response** out of 8.

Independent Validation Commercial Areas

6. Sweeping done in the commercial areas on **Sundays** and **Festivals**

Scheme of Ranking	Marks
Yes	-
No	Minimum -4.50 Maximum -36

Validation Methodology:

- A sample of 8 vendors/shopkeepers to be randomly selected from the commercial area.
- If the response is '**No**', **4.50 marks** will **get deducted** from Part 2-B, **for each negative response** out of 8.

Independent Validation Waste Treatment/Processing

7. Is Waste to Energy/Compost Plant operational (if confirmed in Part-1)

Scheme of Ranking	Marks
Yes	-
No	- 67.50

Validation Methodology:

- If the assessment mismatches , then **67.50 marks** will **get deducted** from Part-2B

Independent Validation Waste Treatment/Processing

8. Is landfilling done in a scientific way (if confirmed in Part-1)

Scheme of Ranking	Marks
Yes	-
No	- 28.75

Validation Methodology:

- If the assessment mismatches , then **28.75 marks** will **get deducted** from Part-2B

Independent Validation Waste Treatment/Processing

9. Remediation is being done at landfill site (if confirmed in Part-1)

Scheme of Ranking	Marks
Yes	0
No	- 28.75

Validation Methodology:

- If the assessment mismatches , then **28.75 marks** will **get deducted** from Part-2B



Ministry of Urban Development
Government of India

Independent Observation Part - 2B

Maximum Marks- 500

Note:

QCI assessors will visit the specific locations and observe/assess the on-field progress against respective indicators.

Independent Observation – Residential areas

Any one of - Slum/Old City/Unplanned area/Planned area
(in order of preference)

1. Is the area clean?

Scheme of Ranking	Marks
Yes, 100% clean	43
Yes, but not 100% clean	20
Not clean (<50% area)	0

Methodology

- Assessors will visit 1 residential area in each zone = total 4 residential areas in a city
- Assessors will move around the residential area and observe/assess if the area is 100% clean, not 100% but largely clean or Not clean (<50% area clean)
- Assessors will not interact with anyone. It will be purely their assessment of the situation
- Assessors will click the pictures to support their observation/assessment

Independent Observation Community Toilet / Public Toilet (CT/PT)

2. Public/Community toilet is gender friendly (Separate section for Men and Woman), child friendly and caters well to differently abled people

Scheme of Ranking	Marks
Yes to all 3	28
Yes to any 2	18
Yes to just 1	9
None	0

Methodology

- Assessors will randomly visit 2 CT/PT in each zone = total 8 CT/PT in a city
- Assessors will not interact with anyone. It will be purely their assessment of the situation
- Assessors will click the pictures to support their observation/assessment

Independent Observation Community Toilet / Public Toilet (CT/PT)

3. Public/Community toilet is well lit (no dark areas), ventilated, water supply/flush and has electricity connection

Scheme of Ranking	Marks
Yes to all 4	28
Yes to any 3	21
Yes to any 2	14
Yes to any 1	7
None of the above	0

Methodology

- Assessors will randomly visit 2 CT/PT in each zone = total 8 CT/PT in a city
- Assessors will not interact with anyone. It will be purely their assessment of the situation
- Assessors will click the pictures to support their observation/assessment

Independent Observation Community Toilet / Public Toilet (CT/PT)

4. Is the public/ community toilet connected with **onsite safe disposal system or sewer network** - no open drainage / no manual scavenging/ Pit latrines

Scheme of Ranking	Marks
Yes	22
No	0

Methodology

- Assessors will randomly visit 2 CT/PT in each zone = total 8 CT/PT in a city
- Assessors will not interact with anyone. It will be purely their assessment of the situation
- Assessors will click the pictures to support their observation/assessment

Independent Observation Community Toilet / Public Toilet (CT/PT)

5. Public/Community toilet is carrying Asli Tarraki Message
(Hoardings/Banners/Wall Paintings/Writing)

Scheme of Ranking	Marks
Yes	10
No	0

Methodology

- Assessors will randomly visit 2 CT/PT in each zone = total 8 CT/PT in a city
- Assessors will not interact with anyone. It will be purely their assessment of the situation
- Assessors will click the pictures to support their observation/assessment

Independent Observation Commercial Areas

6. Is the commercial area clean

Scheme of Ranking	Marks
Totally clean (if 100%)	27
Partially clean (if not 100%)	13
Not clean (< 50% area clean)	0

Methodology

- Assessors will visit 1 biggest Commercial Area in each zone = total 4 in a city
- Assessors will not interact with anyone. It will be purely their assessment of the situation
- Assessors will click the pictures to support their observation/assessment

Independent Observation Commercial Areas

7. Litter bins available in commercial areas

Scheme of Ranking	Marks
1 bin within 500 meters - both sides of the road/ circle	27
1 bin within 500 meters - Only one side of the road	21
More than 500 meters - both sides of the road	14
More than 500 meters – Only one side of the road	7
No bins within 1000 meters	0

Methodology

- Assessors will visit 1 biggest Commercial Area in each zone = total 4 in a city
- Assessors will not interact with anyone. It will be purely their assessment of the situation
- Assessors will click the pictures to support their observation/assessment

Independent Observation

Vegetables/Fruit/Meat Market.

8. On site Composting/Waste Transfer Stations/Primary waste collection centers - Cleanliness

Scheme of Ranking	Marks
Area is clean/ Litter bins available/ No Transfer Stations - Waste being transported through vehicles/centralized composting .	33
On Site Composting being done	22
Partially clean/Partially maintained/Odour is there but acceptable	11
No Clean/Not well-maintained/High odour	0

Methodology

- Assessors will visit 1 biggest Vegetable/Fruit/Meat market in each zone = total 4 in a city
- Besides their observations, assessors may also interact with vendors/shopkeepers to arrive at a final conclusion
- Assessors will click the pictures to support their observation/assessment

Independent Observation

Vegetables/Fruit/Meat Market

9. Big/Visible messaging signage's about cleanliness in the area

Scheme of Ranking	Marks
1 signage within 100 meters	10
1 signage within 200 meters	7
1 signage within 300 meters	5
1 signage within 400 meters	3
1 signage within 500 meters	2
No signage within 500 meters	0

Methodology

- Assessors will visit 1 biggest Vegetable/Fruit/Meat market in each zone = total 4 in a city
- Assessors will not interact with anyone. It will be purely their assessment of the situation
- Assessors will click the pictures to support their observation/assessment

Independent Observation

Agriculture Market

10. Waste Transfer Stations/Primary waste collection centers - Cleanliness

Scheme of Ranking	Marks
Area is clean / Litter bins available / No Transfer Stations - waste being transported through vehicles .	33
On Site Composting being done	33
Partially clean/Partially maintained/Odour is there but acceptable	15
Not Clean/Not well-maintained/High odour	0

Methodology

- Assessors will visit 1 biggest Agriculture Market in the city
- Assessors may interact with Vendors/Shopkeepers to arrive at a final conclusion.
- Assessors will click the pictures to support their observation/assessment

Independent Observation

Agriculture Market

11. Big/Visible signage's about 'No Littering'/'Cleanliness' in commercial areas

Scheme of Ranking	Marks
1 signage within 100 meters	10
1 signage within 200 meters	7
1 signage within 300 meters	5
1 signage within 400 meters	3
1 signage within 500 meters	2
No signage within 500 meters	0

Methodology

- Assessors will visit 1 biggest Agriculture Market in the city
- Assessors will not interact with anyone. It will be purely their assessment of the situation
- Assessors will click the pictures to support their observation/assessment

Independent Observation

Main Railway Station - Catchment area

12. Is the catchment area clean?

Scheme of Ranking	Marks
Very clean (if 100%)	25
Partially clean (if not 100%)	13
Not clean (if <50% clean)	0

Methodology

- Assessors will visit catchment area around the biggest Railway Station in the city
- Assessors will not interact with anyone. It will be purely their assessment of the situation
- Assessors will click the pictures to support their observation/assessment

Independent Observation

Main Railway Station - Catchment area

13. Litter bins placed for each shop

Scheme of Ranking	Marks
100% shops with litter bins	23
< 100% shops with litter bins	12
<50% shops with litter bins	0

Methodology

- Assessors will visit catchment area around the biggest Railway Station in the city
- Assessors will not interact with anyone. It will be purely their assessment of the situation
- Assessors will click the pictures to support their observation/assessment

Independent Observation

Main Railway Station - Catchment area

14. No OD spot on the railway track- either 500 meters before or after the platform ends

Scheme of Ranking	Marks
Yes	38
No	0

Methodology

- Assessors will visit 500 meters either side of the Railway platform
- Assessors will not interact with anyone. It will be purely their assessment of the situation
- Assessors will click the pictures to support their observation/assessment

Independent Observation

Main Bus Station - Catchment area

15. Is the catchment area clean?

Scheme of Ranking	Marks
Very clean (if 100%)	26
Partially clean (if not 100%)	13
Not clean (if <50% clean)	0

Methodology

- Assessors will visit catchment area around the biggest Bus Station in the city
- Assessors will not interact with anyone. It will be purely their assessment of the situation
- Assessors will click the pictures to support their observation/assessment

Independent Observation

Main Bus Station – Catchment area

16. Litter bins placed for each shop

Scheme of Ranking	Marks
100% shops with litter bins	23
< 100% shops with litter bins	12
<50% shops with litter bins	0

Methodology

- Assessors will visit catchment area around the biggest Bus Station in the city
- Assessors will not interact with anyone. It will be purely their assessment of the situation
- Assessors will click the pictures to support their observation/assessment

Independent Observation

Main Bus Station – Catchment area - Public Toilet

17. Public toilet is gender friendly (Separate section for Men and Woman), child friendly and caters well to differently abled people

Scheme of Ranking	Marks
Yes to all 3	26
Yes to any 2	18
Yes to just 1	9
None	0

Methodology

- Assessors will visit Public Toilet in the catchment area around the biggest Bus Station in the city
- Assessors will not interact with anyone. It will be purely their assessment of the situation
- Assessors will click the pictures to support their observation/assessment

Independent Observation

Main Bus Station – Catchment area - Public Toilet

18. Public toilet is well lit (no dark areas), ventilated, water supply/ flush and has electricity connection

Scheme of Ranking	Marks
Yes to all 4	26
Yes to any 3	18
Yes to any 2	12
Yes to any 1	6
None of the above	0

Methodology

- Assessors will visit Public Toilet in the catchment area around the biggest Bus Station in the city
- Assessors will not interact with anyone. It will be purely their assessment of the situation
- Assessors will click the pictures to support their observation/assessment

Independent Observation

Main Bus Station – Catchment area - Public Toilet

19. Is the public toilet connected with onsite safe disposal system or sewer network - no open drainage/ no manual scavenging/ Pit latrines

Scheme of Ranking	Marks
Yes	22
No	0

Methodology

- Assessors will visit Public Toilet in the catchment area around the biggest Bus Station in the city
- Assessors will not interact with anyone. It will be purely their assessment of the situation
- Assessors will click the pictures to support their observation/assessment

Independent Observation

Main Bus Station – Catchment area - Public Toilet

20. Public/Community toilet is carrying Asli Tarraki Message
(Hoardings/Banners/Wall Paintings/Writing)

Scheme of Ranking	Marks
Yes	10
No	0

Methodology

- Assessors will visit Public Toilet in the catchment area around the biggest Bus Station in the city
- Assessors will not interact with anyone. It will be purely their assessment of the situation
- Assessors will click the pictures to support their observation/assessment

Independent Observation

Waste Treatment/Processing Plant

21. Swachh Survekshan - at least one hoarding is in place

Scheme of Ranking	Marks
Yes	10
No	0

Methodology

- Assessors will visit the biggest Waste treatment/processing Plant in the city
- Assessors will not interact with anyone. It will be purely their assessment of the situation
- Assessors will click the pictures to support their observation/assessment



एक कदम स्वच्छता की ओर



सत्यमेव जयते

Ministry of Urban Development
Government of India

...let's make cities cleaner